

RTS23 Radio wall switch modular

Format 55

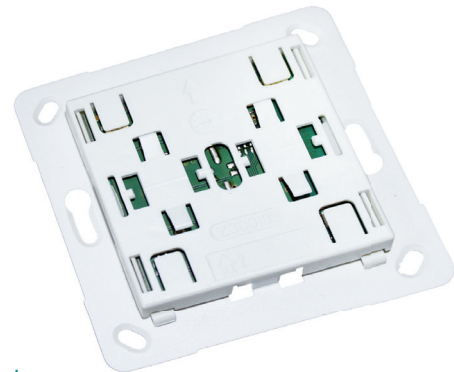
The RTS23 wall switch from the Format 55 range is a battery-powered Easywave transmitter. The function of the wall switch is defined by combining it with different rockers.

The radio switch can be integrated into cover frames with a cut-out dimension of 55 x 55 mm produced by various manufacturers (see compatibility list).

The transmitter module is combined with the desired rocker, simply clipped into the cover frame and is immediately operational. It can then be mounted on the wall using either adhesive pads or screws.

The RTS23 is generally used as a light switch to turn lights ON or OFF with a 2-button operation as well as to control roller shutters.

Please order rockers separately!



RTS23E5004A11-02K

Technical specifications

Coding	Factory coding with Easywave telegram
Frequency	868.30 MHz
Channels	1, 2 or 4
Range	typically 150 m in good free-field conditions
Power supply	1x 3V battery, CR2032
Operation	transmission lasts as long as the button is pressed (maximum 36 seconds)
Operating temperature	-20 °C to +60 °C
Dimensions (W/L/H)	rocker: 27/55/9 mm mounting plate: 71/71/1,5 mm
Weight	34 g (including battery)
Color	white similar to RAL 9003 anthracite gray similar to RAL 7016 lacq. aluminum similar to RAL 9006

Scope of delivery

- Transmitter module including battery
- Mounting plate
- Adhesive pad
- Operating manual

Accessories (optional)

RTS22-ACC-01-01P	mounting plate, white
RTS22-ACC-05	Cover frame single, Format 55



RTS22-ACC-01-01P



RTS22-ACC-05

Models

Product numbers

Product numbers	Description
RTS23E5004A11-02K	Wall switch for double rockers, Easywave, Format 55 / Format B6
+ RTS23-ACC-01-02P2	Double rockers, 2x ON/OFF, Format55, for RTS23, white
+ RTS23-ACC-01-24P2	Double rockers, 2x ON/OFF, Format55, for RTS23, anthracite
+ RTS23-ACC-01-25P2	Double rockers, 2x ON/OFF, Format55, for RTS23, lacq.aluminum
+ RTS23-ACC-02-02P2	Double rockers, 2x UP/DOWN, Format55, for RTS23, white
+ RTS23-ACC-02-24P2	Double rockers, 2x UP/DOWN, Format55, for RTS23, anthracite
+ RTS23-ACC-02-25P2	Double rockers, 2x UP/DOWN, Format55, for RTS23, lacq. aluminum
+ RTS23-ACC-03-02P2	Double rockers, 1x UP/STOP/DOWN, Format55, for RTS23, white
+ RTS23-ACC-03-24P2	Double rockers, 1x UP/STOP/DOWN, Format55, for RTS23, anthracite
+ RTS23-ACC-03-25P2	Double rockers, 1x UP/STOP/DOWN, Format 55, for RTS23, lacq. aluminum

Models

Rockers



2x ON/OFF
RTS23-ACC-01-xxP2



2x UP/DOWN
RTS23-ACC-02-xxP2



1x UP/STOP/DOWN
RTS23-ACC-03-xxP2