

RCL07 Call receiver

external programming



The RCL07 call receiver has two channels. One channel is used for the operating modes and the switching functions. The second channel is activated when it receives an undervoltage telegram.

An LED lights up when the RCL07 receives a telegram from a call transmitter and the receiver switches according to the selected operating mode.

If the acknowledgment function is activated, receipt of an incoming call can be acknowledged using a programmed acknowledgment transmitter or directly on the RCL07.

With the care function, the call function can be muted for 15 minutes.

The RCL07 is also able to evaluate undervoltage telegrams signaling that the batteries in compatible radio transmitters are too low.

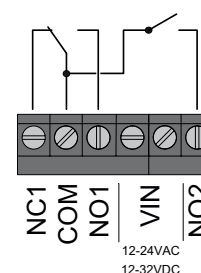


RCL07E5002B30

Technical specifications

Coding	Easywave 32 CALL, 8 ACKNOWLEDGE and 8 CARE transmitters can be programmed.
Frequency	868.30 MHz
Channels	2
Power supply	12-24 V AC / 12-32 V DC
Power consumption	10 mA standby 45 mA load (both relays are switched)
Functions	CALL function ACKNOWLEDGE function CARE function battery undervoltage detection
Outputs	2 potential-free relay contacts (combined) 1x changeover (call) 1x normally open (battery undervoltage)
Maximum contact load AC (Ω)	120 V AC / 1 A / 62 W
Maximum contact load DC	50 V DC / 1 A / 30 W
Protection degree	IP54 (with installed \varnothing 5,30mm cable)
Operating temperature	-20 °C to +60 °C
Dimensions (W/L/H)	35/80/20 mm
Color	white similar RAL 9003

Wiring diagram



Scope of delivery

- Call receiver
- Operating manual

Models

Product number	Description
RCL07E5002B30	Call receiver, Easywave, 12-24VAC/12-32VDC, potential-free, IP54, battery low, external programming, white