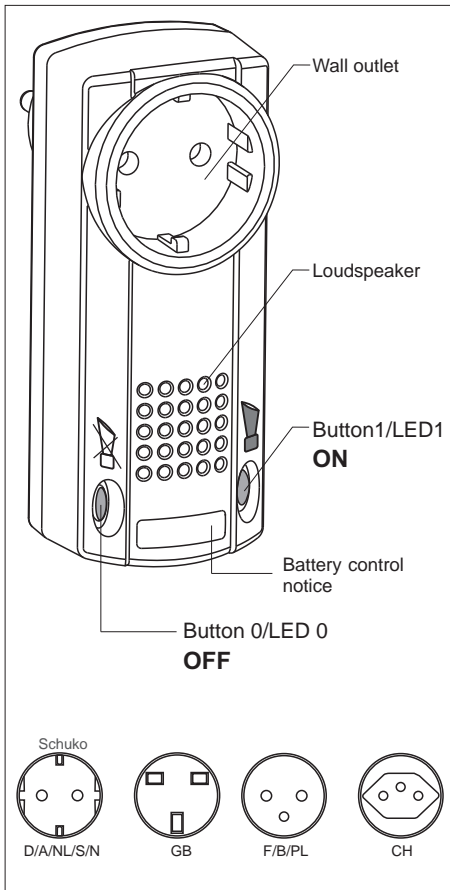


Models



RTRP02E5001-01	868.30 MHz	D
RTRP02E5001-02	868.30 MHz	GB
RTRP02E5001-04	868.30 MHz	F/B
RTRP02E5001-05	868.30 MHz	CH

Technical Details

Frequency:	868.30 MHz
Modulation:	FSK
Channel:	1x receive / 2x transmit
Range:	up to 150 m under favourable open field conditions
Operating voltage:	230 V AC / 50 Hz
Current consumption	
- real power:	max. 0.6 W
- apparent power:	max. 1.8 VA
Degree of protection:	IP 20
Operating temperature:	-20°C to +35°C
Max. relative air humidity:	60%
Mains output:	Power plug (non switchable)
Max. contact load:	10 A / 230 V AC
Dimensions (HxWxD):	122 x 50 x 38.3 mm
Weight:	approx. 190 g
SPL:	85 dB / distance 30 cm

Scope of Delivery

Alarm annunciator RTRP02, Operating instruction

Safety Advice



Carefully read through these instructions before using the device.

We do not accept any liability for personal injury or damage to property caused by incorrect handling or non-observance of the safety instructions!

Keep the Alarm annunciator away from children!

Attention! Observe the admissible supply voltage and the maximum contact load of the wall outlet (10 A, 230 V AC / 50 Hz)!

Do not plug one Alarm Annunciator into another.

The device is only de-energized when it is disconnected from the mains supply.

The device must be easily accessible.

Observe the valid laws and regulations as well as the manufacturer's instructions for the devices to be operated.

Have malfunctioning devices checked by the manufacturers!

Do not open the appliance's casing!

Do not make any unauthorized alterations or modifications to the device!

Intended Use

The alarm indicator RTRP02 may only be used in dry indoor rooms as acoustic signalling device for alarm messages and messages concerning the battery status of the window handle contact RTS26 (evaluation of undervoltage diagram). The outlet can only be used for mains voltage consumers (10 A, 230 V AC, 50 Hz).

The manufacturer will not be liable for damage caused by improper or inappropriate use.

Function

The alarm indicator RTRP02 is a wireless receiver that reports manipulations to the window handle by emitting an acoustic signal in connection with an activated wireless window handle contact RTS26.

Altogether 32 window handle contacts can be monitored by the alarm indicator.

It is also possible to evaluate an undervoltage telegram indicating the low battery status of a window handle contact.

The low battery status is signalled with a blinking battery status display and can be deactivated by pressing the button 1 or 0 on the alarm indicator. This function is also available when the alarm indicator is deactivated.

Concept of Operations

Function/Chapter	Operation [press the button]	LED-view RTRP02	Result
Memorizing a Window handle contact RTS26	1. button 0 + button 1 >1,6 s button 0 2. button RTS26	LED 0 + LED 1 flashes LED 1 lights up 3 s	after 20 s operation mode break afterwards operation mode
Memorizing an acknowledgement transmitter	1. button 0 + button 1 >1,6 s button 0 2. button 1 >1,6 s button 0 3. button acknowledgement trans.	LED 0 + LED 1 flash LED 1 flashes LED 1 lights up 3 s	after 20 s operation mode break after 20 s operation mode break afterwards operation mode
Switch on alarm function	button 1 >1,6 s	LED 0 + LED 1 light up	Alarm annunciator activates
Switch off alarm function	button 0 >1,6 s	LED 0 + LED 1 out	Alarm annunciator deactivates
Acknowledge the alarm	button 0 oder button 1 or button acknowledgement transm.		Further alarm messages are possible after 5 minutes.
Switch on lighting (Transmission code A1 (ON) transfer)	1. button 0 + button 1 >1,6 s button 0 2. button 1 >1,6 s button 0 3. button 1	LED 0 + LED 1 flash LED 1 flashes LED 1 lights up 3 s	after 20 s operation mode break after 20 s operation mode break Send code A1 is sent for 3 s, afterwards operation mode
Close a shutter (Transmission code B2 (DOWN) transfer)	1. button 0 + button 1 >1,6 s button 0 2. button 0 >1,6 s 3. button 0	LED 0 + LED 1 flash LED 0 flashes LED 0 flashes 3 s	after 20 s operation mode break after 20 s operation mode break Send code B2 is sent for 3 s, afterwards operation mode
Reset to Default Settings (RESET)	1. button 0 + button 1 >1,6 s button 0 2. button 0 + button 1 >1,6 s	LED 0 + LED 1 flash LED 0 + LED 1 light up 3 s	after 20 s operation mode break dann operation mode
Undervoltage message window handle contact	acknowledge with button 0 oder button 1	battery control notice flashes	change the battery of the window handle contact

If the window handle contact detects a movement of the window handle, a radio message is sent to the alarm indicator and an alarm sound is emitted for approx. 3 minutes. This alarm signal can be turned off directly on the alarm indicator or with an additional wireless transmitter.

The outlet cannot be switched wireless and may instead be used as a connection for electrical devices (230 V AC, 50 Hz, up to 16 A).

Memorizing the code of a window handle contact RTS26

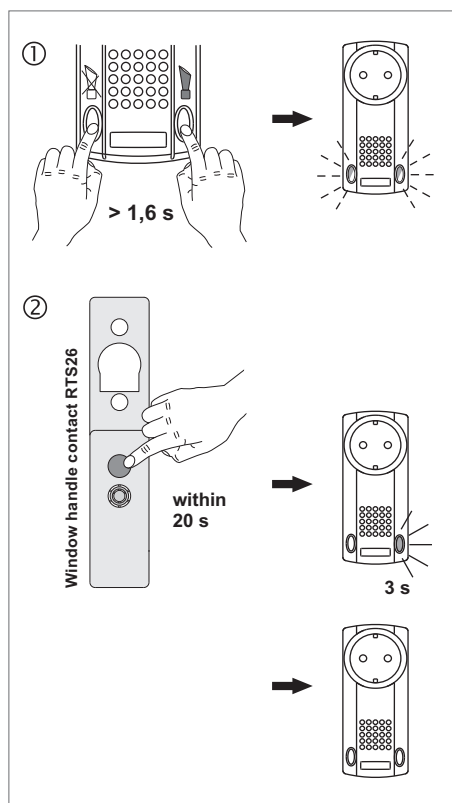
This function serves to transfer the coding of the window handle contacts to the alarm indicator.

1. Press button 1 and button 0 simultaneously until both LEDs blink. If you want to cancel the teach-in process, briefly press the button 0.
2. Press the button on the window handle contact within 20 seconds. If there is no input within 20 seconds, the alarm indicator switches automatically to "ready for operation".

If the coding was transferred, LED 1 blinks for approx. 3 seconds. Afterwards, the alarm indicator changes its status to "ready for operation".

Repeat this procedure with every window handle contact.

In case a window handle contact that was already taught in issues an alarm, the teach-in process cannot be activated.



Memorizing the code of an acknowledgement transmitter

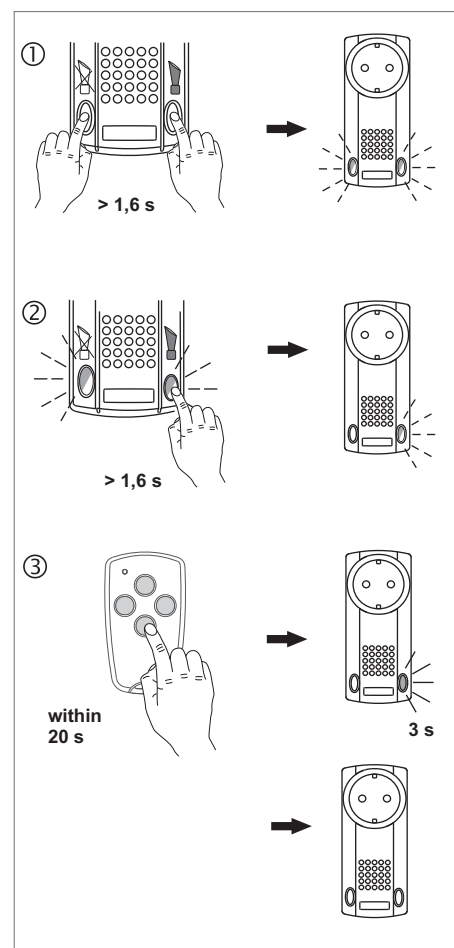
This function serves to transmit the coding of a wireless transmitter to the alarm indicator.

1. Press button 0 and button 1 simultaneously until both LEDs blink. If you want to cancel the teach-in process, briefly press the button 0.
2. Press button 1; now LED 1 blinks.
3. 1. Press the button of the wireless transmitter which you want to use to acknowledge the alarm signal within 20 seconds until LED 1 of the alarm indicator lights up. After approx. 3 seconds, the alarm indicator switches to "ready for operation".

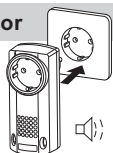
If there is no input within 20 seconds, the alarm indicator switches automatically to "ready for operation".

You can save at most four send codes. If you teach in more transmitters, the oldest code is overwritten.

In case a window handle contact that was already taught in issues an alarm, the teach-in process cannot be activated.



Start-up the Alarm annunciator



1. Plug the alarm annunciator into any wall outlet, you can hear an acknowledgement signal.
2. Teach the codes of the window handle contacts into the alarm indicator (see chapter "Teaching in the window handle contact RTS26").
3. Activate the alarm function (see chapter "Activating/deactivating the alarm function").

Caution: Make sure that there is no interference with the wireless connection. Do not mount the device in a distribution box, metal casings or in direct proximity to large metal objects.

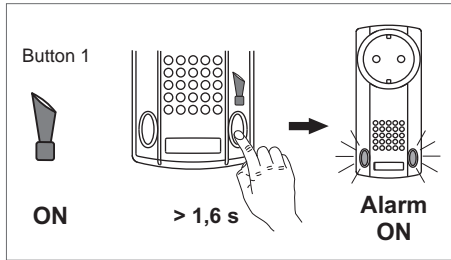
Aktivate/deactivate the alarm function

An alarm message can only be received if the alarm function is activated and if the coding of a window handle contact was taught into the alarm indicator.

After a power failure, the alarm function is activated automatically.

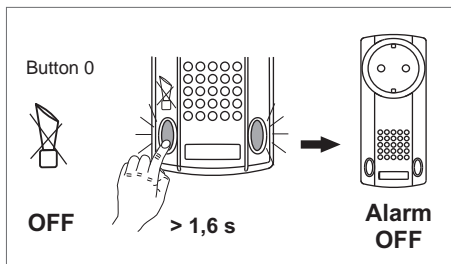
Switch on the alarm function

Keep button 1 depressed until the two status LEDs turn red.



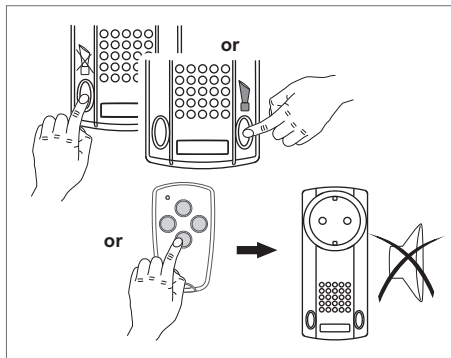
Switch off the alarm function

Keep button 0 depressed until the two red status LEDs go off.



Acknowledge the alarm

The alarm sound can be turned off with the buttons 1 or 0 or with the acknowledgement transmitter.



Attention! After an alarm message, the alarm indicator is deactivated for 5 minutes. The LEDs blink alternately. Further alarms will not be signalled during this time.

In order to cancel this status, turn the alarm function OFF once and then ON again.

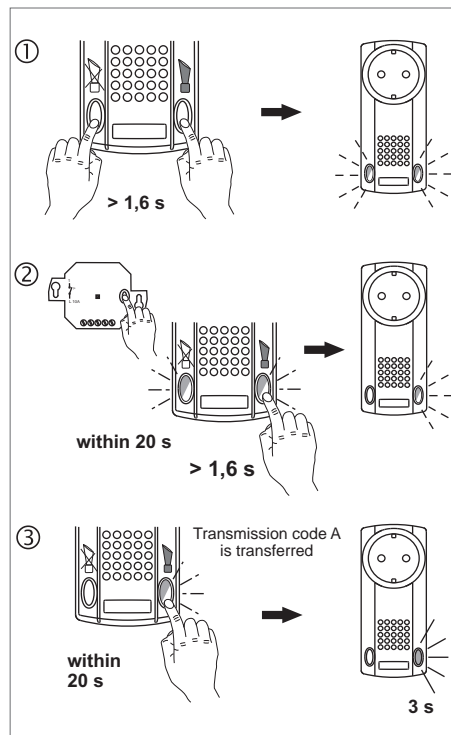
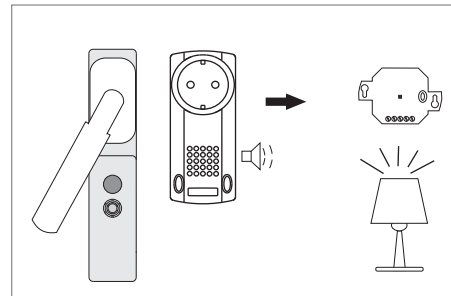
Switch on lighting

This function serves to transmit the Easywave send code A1 (ON) to an Easywave wireless receiver. This way, e.g. a light source or another electrical appliance can be activated in case of an alarm.

Transmit the send code of the RTRP02 to the receiver:

1. Press button 0 and button 1 simultaneously until both LEDs blink. If you want to cancel the teach-in procedure, briefly press button 0.
2. Ready the wireless receiver for the teach-in process. Within 20 seconds, press the button 1 on the alarm indicator until LED 1 blinks.
3. Press the button 1 again within 20 seconds; LED 1 is lit. The send code A is transmitted for 3 seconds. Afterwards, the alarm indicator changes its status to "ready for operation".
If there is no input within 20 seconds, the alarm indicator switches automatically to „ready for operation“.

Attention! After a RESET, send code A can no longer be sent automatically in case of an alarm. Repeat the steps 1 to 3 in order to reactivate the function. The wireless receiver does not have to be set to teach-in mode for this purpose.



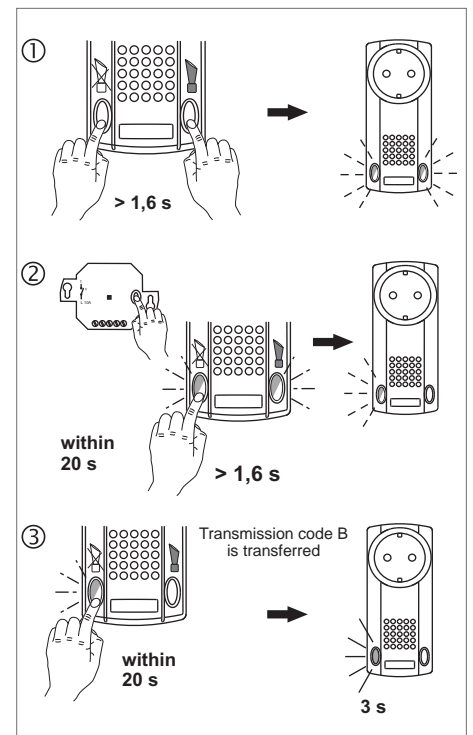
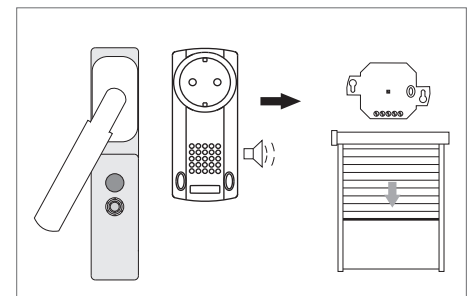
Close a shutter

This function serves to transmit the Easywave send code B2 (DOWN) to an Easywave wireless receiver. This way, e.g. a shutter can be closed or another electrical appliance can be activated in case of an alarm.

Transmit the send code to the receiver as described in the following:

1. Press button 0 and button 1 simultaneously until both LEDs blink. If you want to cancel the teach-in process, briefly press the button 0.
2. Ready the wireless receiver for the teach-in process. Within 20 seconds, press the button 0 on the alarm indicator until LED 0 blinks.
3. Press the button 0 again within 20 seconds; LED 0 is lit. The send code B is transmitted for 3 seconds. Afterwards, the alarm indicator changes its status to "ready for operation".
If there is no input within 20 seconds, the alarm indicator switches automatically to „ready for operation“.

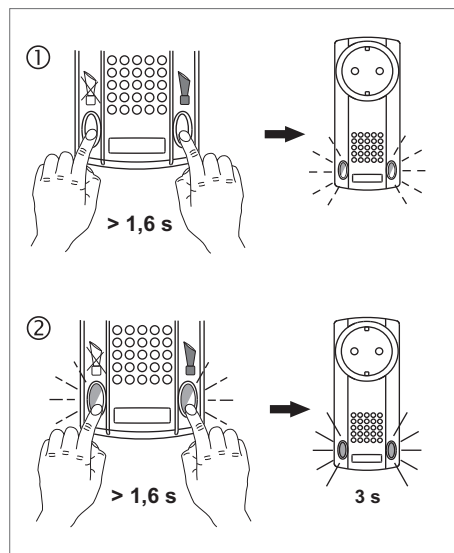
Attention! After a RESET, send code A can no longer be sent automatically in case of an alarm. Repeat the steps 1 to 3 in order to reactivate the function. The wireless receiver does not have to be set to teach-in mode for this purpose.



Reset to Default Settings (RESET)

In case of a RESET, all codes registered with the alarm module are deleted.

1. Press button 0 and button 1 simultaneously until both LEDs blink. If you want to cancel the process, briefly press the button 0.
2. Keep the buttons 0 and 1 depressed simultaneously once again until both buttons are lit. All codes were deleted and the alarm function is no longer active.



General Information

Disposal

Waste electrical products should not be disposed of with household waste!

Dispose of the waste product via a collection point for electronic scrap or via your specialist dealer.



Put the packaging material into the recycling bins for cardboard, paper and plastics.



Warranty

We will remedy defects on the device based on material or production errors within the statutory warranty period or exchange the device.

Any unauthorized tampering with, or modifications to, the product shall render this warranty null and void.

Conformity

The product fulfils the essential requirements of the R&TTE directive 1999/5/EG.



For application in: EU/CH/FL/IS/N

The Declaration of Conformity can be found on the internet at: www.eldat.de.

Customer Service

If the device does not work properly despite proper handling or in case of damage, please contact your retailer or the manufacturer:

ELDAT GmbH

Im Gewerbepark 14
15711 Zeesen
Germany

Phone: + 49 (0) 33 75 / 90 37-310

Fax: + 49 (0) 33 75 / 90 37-90

Internet: www.eldat.de

E-Mail: info@eldat.de